

ROEBUCK SUBDIVISION

A REPLAT OF TRACT 8, BLOCK 19, AND TRACT 5, BLOCK 30, ST. LUCIE INLET FARMS, PLAT BOOK 1, PAGE 98, PUBLIC RECORDS OF PALM BEACH (NOW MARTIN) COUNTY, FLORIDA, HANSON GRANT, MARTIN COUNTY, FLORIDA.

I, Louise V. Isaacs, Clerk of the Circuit Court of Martin County, Florida, hereby certify that this Plat was filed for record in Plat Book 1, Page 99, Martin County, Florida, Public Records this day of _____, 1982.

LOUISE V. ISAACS, CLERK
CIRCUIT COURT
MARTIN COUNTY, FLORIDA

BY: _____
Deputy Clerk

File No. _____

ROEBUCK SUBDIVISION is a Planned Unit Development further subject to the provisions of the Declaration of Protective Covenants pertaining to ROEBUCK SUBDIVISION, together with the provisions of the ROEBUCK HOMEOWNERS ASSOCIATION, INC., a Florida non-profit corporation, together with the By-laws of said ROEBUCK HOMEOWNERS ASSOCIATION, INC., as same are recorded in the public records of Martin County, Florida.

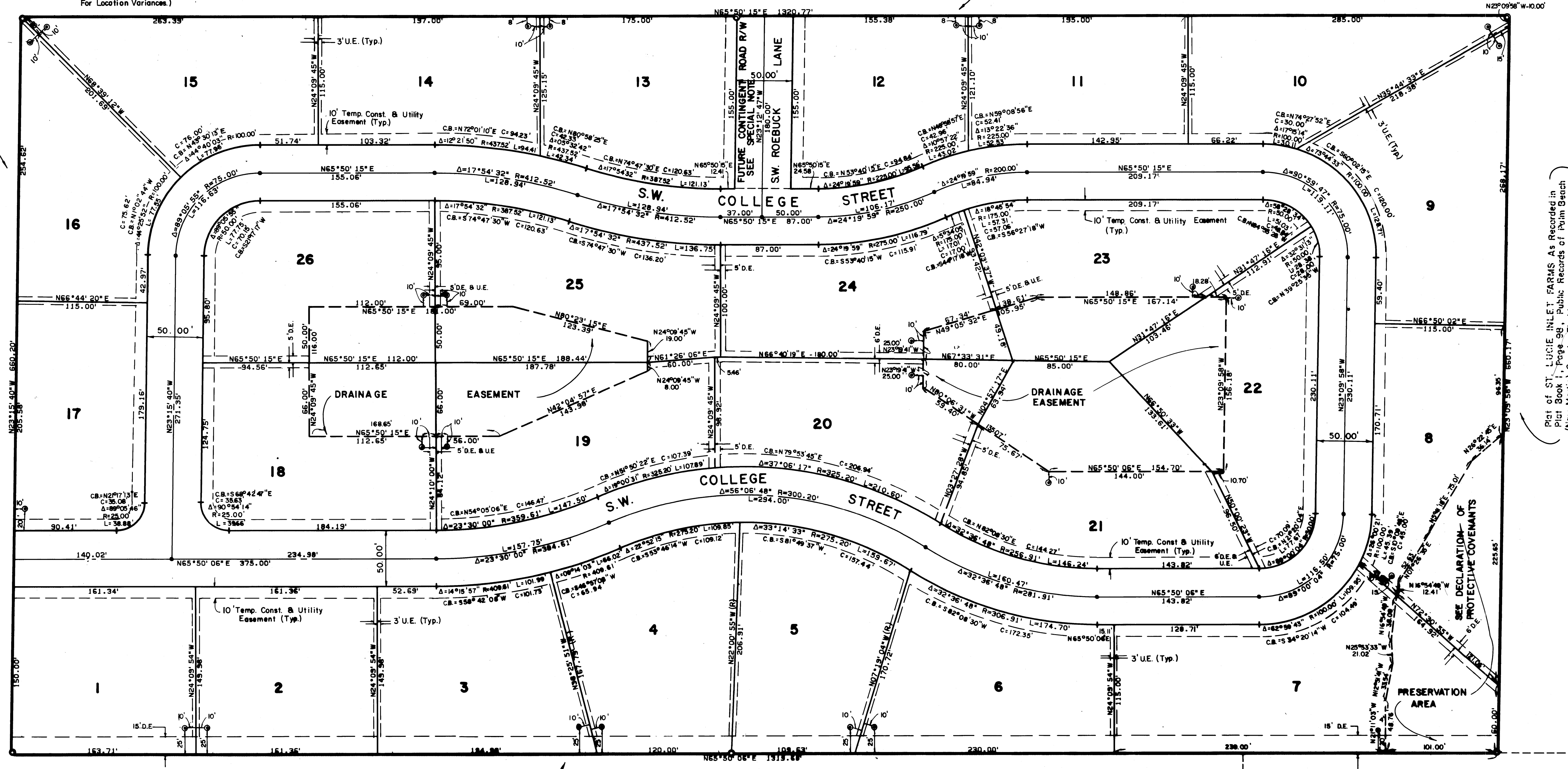
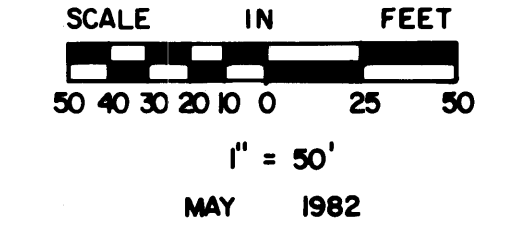
- LEGEND**
- ⊙ Denotes (P.R.M.) Permanent Reference Monument
 - Denotes (P.C.P.) Permanent Control Point
 - (R) Denotes a Radial Line
 - UE. Denotes Utility Easement
 - D.E. Denotes Drainage Easement
 - ⊙ Denotes Proposed Well Site Location (Refer to Planned Unit Development Zoning Agreement For Location Variances.)

HUTCHEON ENGINEERS INCORPORATED

CIVIL ENGINEERS and LAND SURVEYORS
BELLE GLADE - STUART - WEST PALM BEACH

SHEET 2 OF 2 SHEETS

Plat of ST. LUCIE INLET FARMS As Recorded in Plat Book 1, Page 98, Public Records of Palm Beach (New Martin) County, Florida.



Plat of ST. LUCIE INLET FARMS As Recorded in Plat Book 1, Page 98, Public Records of Palm Beach (New Martin) County, Florida.

Plat of ST. LUCIE INLET FARMS As Recorded in Plat Book 1, Page 98, Public Records of Palm Beach (New Martin) County, Florida.

Plat of JAMES VILLA As Record in Plat Book 3, Page 131, Public Records of Martin County, Florida.

Unplotted